

## ***Soil Amendments by Quantum Turf Technologies***

### **USED IN CONJUNCTION WITH TOP DRESSING**

- Increases water retention and release
- Reduces compaction
- Promotes deeper roots
- Reduces turf damage

### **DURABILITY**

- Adds porosity to high traffic areas
- Superior durability

### **SOIL STRUCTURE**

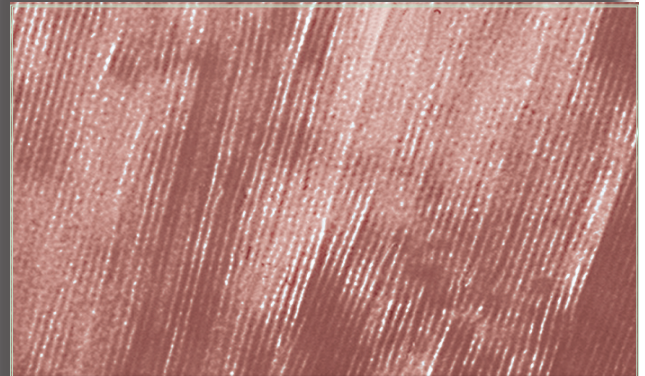
- Modifies dry & wet conditions
- Modifies soil by addition of air holding pore space

### **MAINTENANCE**

- Reduces irrigation
- USGA sizing

### **APPLICATIONS**

- Top dressing
- New construction
- Core Aerification
- Eliminate wet areas



Calcined Clay - Microscopic picture

- ✓ RZA-CC has 74% pore space.
- ✓ RZA-CC has a CEC of 16.9.
- ✓ RZA-CC is a porous ceramic and compatible in a USGA Green.
- ✓ RZA-CC Bulk density is 1060 lbs/cu yd.
- ✓ RZA-CC top dressing mix 90% sand, 10% RZA-CC.

